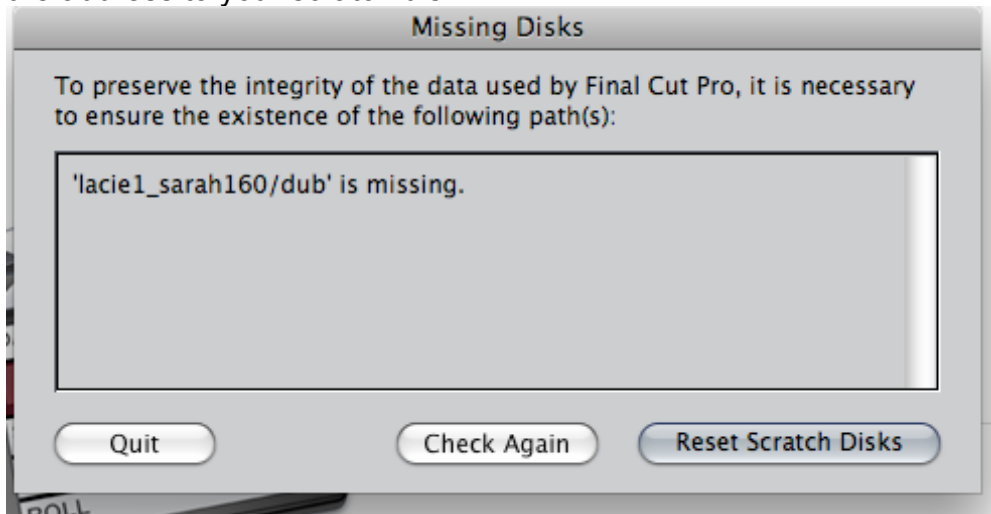


Final Cut Pro LOG AND CAPTURE Cheat Sheet

For the rest of this document, Final Cut will be abbreviated as “FCP”

Start up FCP AND RESET SCRATCH DISKS:

- When you open up fcp you might get this dialogue box telling you to reset the path, or the address to your scratch disk.



- if you have already reset your scratch disk and are returning to your project after a break, you might not get this dialogue box.

Resetting the scratch disks:

Why: be sure to save all your project in one folder on your own external drive

Click the “reset scratch disks button”

Navigate to your hard drive, and to the folder of your project. If you are starting a new project, create a new folder and name it with the assignment. Use this folder on your hard drive for all files associated with your project. Select the “continue” button.

FCP opens 4 windows: BROWSER, VIEWER, CANVAS, TIMELINE

BROWSER is a bin to hold the clips you log and capture.

VIEWER lets you see and edit clips in the browser.

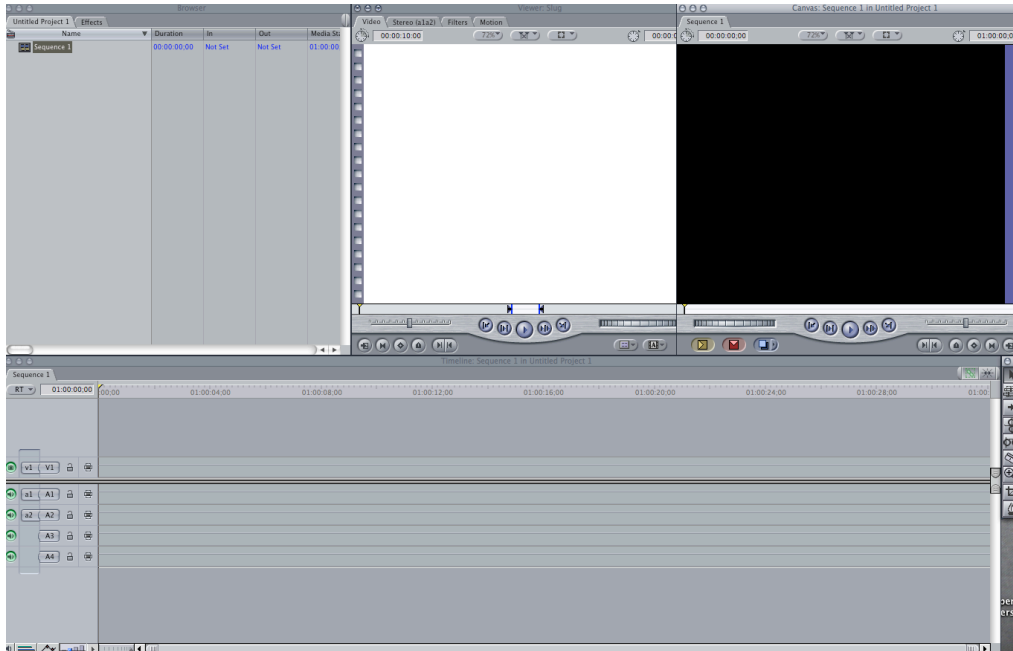
TIMELINE is where you edit your clips in the sequence.

CANVAS lets you view film in progress and edit the track on the timeline.

To get all 4 of the windows to appear (if they are not in the right place)

Go: from the top menu drop down menu WINDOW-> ARRANGE -> STANDARD

If that doesn't work, just quit FCP and restart it again. Then rearrange the windows.



FCP Interface. The Browser, viewer and timeline have tabs where you can get different views of what you are working on.

SAVE YOUR PROJECT. Name the project and save in the same scratch disk folder.

A project file has a different icon from a movie clip file: Look at the icons below.

“May 08 strike speak” is a project file which saves all information about the project.

“on strike singing” is a movie clip.

<p>The top clip is a project file- master info for your project. The others are movie clips.</p>	<p>Detailed information about your project file.</p> <p>You can see when it was last saved and worked on. This will also always be a small file.</p> <p>You can open your project from this file.</p> <p>Name May 08 strike speak Kind Final Cut Pro Project File Size 1.3 MB on disk Created 5/11/08 9:16 PM Modified 5/11/08 9:16 PM st opened 5/11/08 9:16 PM</p> <p>More info...</p>
<p>These folders appear in your hard drive in your project folder. “Capture scratch” is where the movie clips live.</p>	

TO LOG AND CAPTURE

Insert your tape into the play deck and make sure you have time code showing.

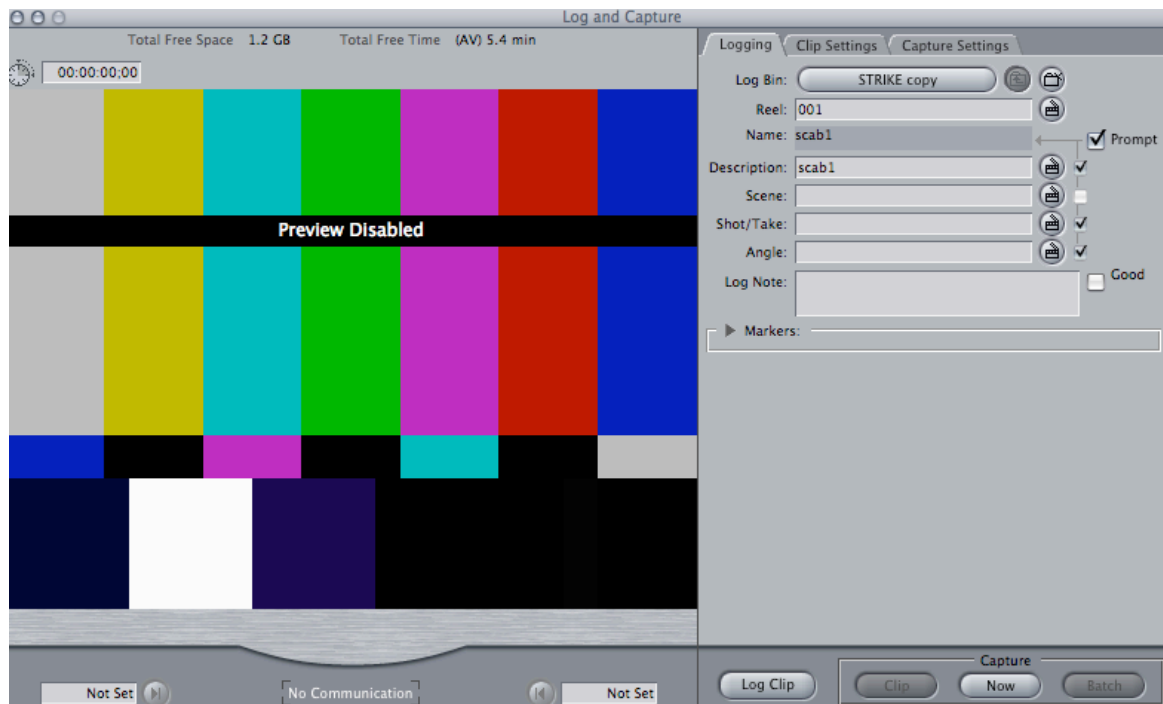
GO -> Top menu bar FILE dropdown -> **Log and capture**

SHORTCUT -> command 8

A box says “initializing log and capture” before opening a new window.

The small controls below the color bars will control your tape deck.

Use these controls to control your tape deck. You can also use J-K-L and space bar.



If they don't work or your footage doesn't appear in the capture window, reconfigure capture settings in the “CAPTURE SETTINGS” tab.

	<p>Choose Capture Settings tab.</p> <p>Drop down DEVICE CONTROL menu, select Firewire NTSC</p>
--	--

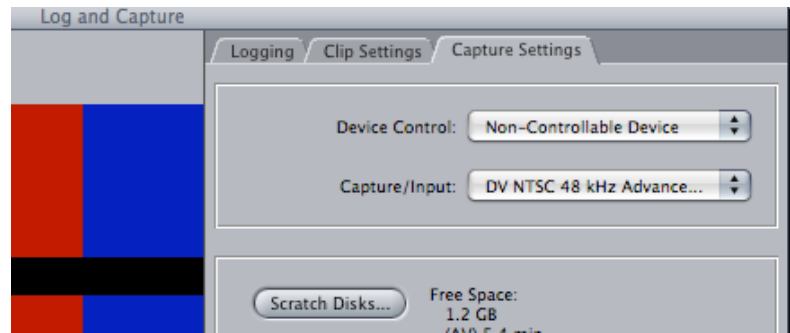
log and capture window TABS:

Capture settings

reset your scratch disk

Clip settings monitor sound, select audio/video. choose “audio preview” to hear your audio.

LOGGING tab for logging your tape.



Logging your tape: Go to LOGGING TAB.

Start at the beginning of the tape. Roll to a clip you want to use.

A little before the part you want begins, hit “i” for “in”

Roll until that part is over, hit “o” for “out”

At right, fill in a description- what the person is saying or what you see – in the window called “DESCRIPTION” You can add info on the other boxes too if you like.

Add more notes on what is being said, or camera work or audio on “LOG NOTE”

Hit the button “LOG CLIP”

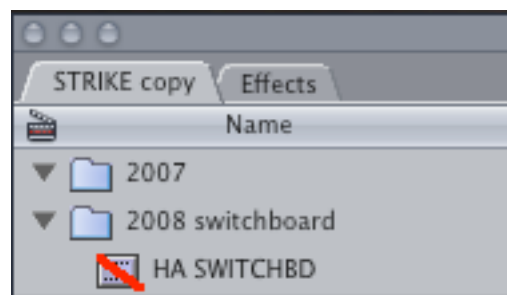
A dialogue box lets you add more notes. Do so, then hit ok

This will help you edit later. Keep logging all your good clips this way—rolling to a good “in” point (give a little room before), rolling until the good part is over, and hitting “o” for “out”, typing in as much info as possible, then ‘LOG CLIP’.

The logged but uncaptured clip will appear in your BROWSER, IN the logging bin (the bin with the slate beside it), with the name and description of your clip, and a red line through it.

A clip that has been logged but not captured. (HA SWITCHBD)

notice the little slate that indicates the whole browser is the logging bin.



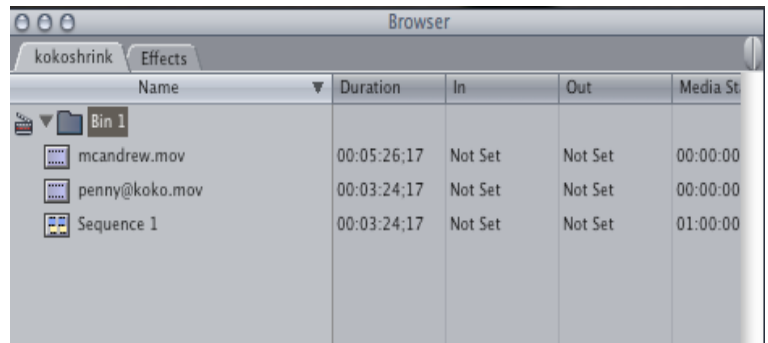
SETTING A LOGGING BIN

If you are working with several tapes or several different kinds of footage, you can use the bins in your BROWSER to organize your clips. A logging bin collects all clips that have been been logged but not captured. It is handy to keep them together.

Bin 1 is a logging bin ready for logging clips. Notice the slate next to Bin 1

Select a bin with your cursor. Go File menu -> Set Logging BIN. The little slate will show on that bin now.

To get a new BIN go: Command "B"



When you have a logging bin full of clips with red lines across them,

select -> capture -> BATCH at right bottom of the log & capture window.

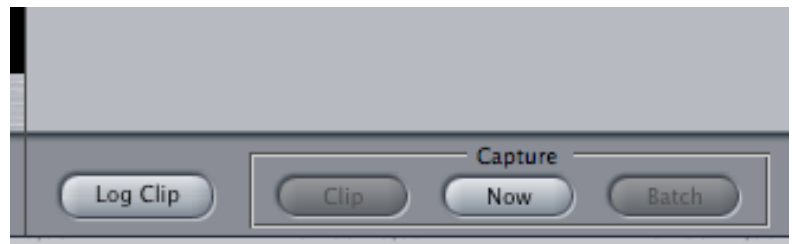
If your time code is continuous, the computer will control the tape deck to capture all of your clips automatically. Now you can relax and think about the clips you have selected as they play one after another.

If your time code has been broken, it is better to log all clips from 00:00 to where the code is broken first, then capture these....

Then go to the next part of the tape where 00:00 begins again, and log all these clips, and capture them, etc.

The deck will always look for the time code to work; if you have problems it might be because of your time code.

AT right: BATCH capture BUTTON to capture logged clips



The red lines on the clips in the BROWSER will go away after this process, and you can view and edit your clips in the viewer window and continue to edit your clips in the timeline.

AFTER EDITING:

Now you have your timeline ready to export.

First compress a quick time movie of your finished edit.

A smaller, compressed version will be easier to upload.

In FCP on your timeline, either select your entire track,--

OR put an IN point at the beginning of the sequence you wish to export edit, and an OUT at the end of your good final sequence.

How TO EXPORT YOUR MOVIE: Select the TIMELINE.

place cursor at the beginning of your movie.

Hit the "I" key. an in mark will appear on the timeline

Now place cursor at end of your movie.
Hit the "O" key. an out mark will appear on the timeline

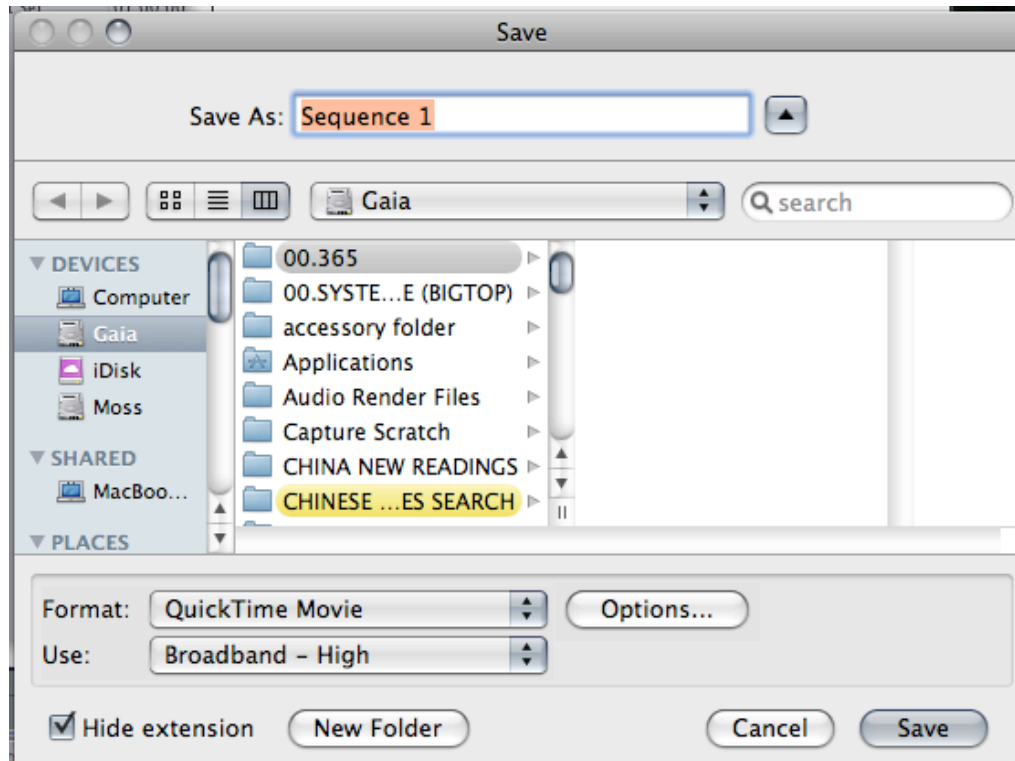
Now: Top menu: FILE -> EXPORT -> USING QUICKTIME CONVERSION
in the bottom drop down menus, select:

Format: Quicktime Movie

Use: BROADBAND HIGH (drop down)

Name your movie file: yourname.assignmentname.mov

HIT SAVE BUTTON--



Your movie will compress into a self contained quicktime movie that is a good size to put in the server.

When it is finished compressing, post into server as below.

From the desktop menu of the apple computers:

top Menu: GO-> CONNECT TO SERVER

SELECT nmclab.siu.edu

and CONNECT

in the dialogue box that shows up:

NAME: rt365lewisn

PASSWORD: video

put your quicktime movie file with your name on it in the appropriate folder.

thanks for your consideration.